

# CY5000™ & CY5500™

High-Pressure Surface Cleaning and Water Recovery / Recycling System



Smart cleaning.

A Nilfisk-Advance Brand



# CY5000™ & CY5500™

## High Pressure Surface Cleaning and Water Recovery / Recycling System

With the help of the revolutionary Cyclone™ surface-cleaning technology, the Advance CY5000/CY5500 delivers unmatched deep cleaning of concrete and other hard surfaces by scouring away dirt, tire marks, and petroleum deposits, with no discharge into the environment or damage to the cleaned surface. Virtually all water is reclaimed and contaminants are filtered out, allowing for the re-use of the reclaimed water for extended cleaning cycles. This remarkable self-contained system delivers the most environmentally-friendly outdoor surface cleaning solution by minimizing water usage, eliminating chemical use and water runoff, and aiding in EPA compliance. One-pass cleaning by a single operator dramatically increases productivity and provides a greater return on investment.

### *Ideal applications include:*

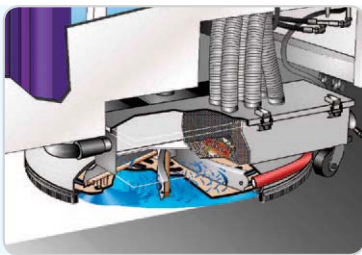
- Parking Garages and Lots
- Resorts and Theme Parks
- Sidewalks and Roadways
- Transit Authorities
- Convention Centers
- Airport Plane Terminals
- Glycol Recovery
- Environmental Clean-up
- Spill Recovery
- Public Works

## Cyclone™ surface-cleaning technology.

Outdoor surface cleaning will never be the same.

### *Here's how it works:*

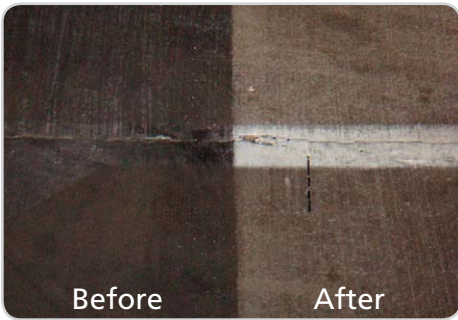
- Cleaning head with 8 turbine blades rotates at high speed to create a vortex of air and water equivalent to a category 4 hurricane.
- Continuous movement keeps water from pooling and allows incoming high-pressure water to directly contact the surface for maximum cleaning power.



- Waste water scours away dirt as it's pulled over the surface to complement the pressurized water and deeply clean in a single pass.
- The rotational movement of the turbine blades creates lift that reclaims water, which is pumped back to the trailer—without a vacuum system.

- A multi-stage filtration system helps to minimize water usage and extend the cleaning cycle by removing dirt and contaminants, converting reclaimed water into reusable clean water.





Ground-in dirt, heavy buildup—even surface stains—are removed in a single pass with no damage to the surface.



Integrated curb cleaner for the vertical faces of curbs.



Four washable, lifetime stainless steel filters provide re-usable water with CY5000.



Comfortable, ergonomically designed cab with intuitive operator controls.



Large cap and 3 inch drain makes cleanup fast and simple.



Easy access to high pressure water pump, adjustable from 800 to 4,350 psi.

## Cyclone CY5000/5500™ Technical Specifications

| Model                           | CY5000 - ST  | CY5000  | CY5500  |
|---------------------------------|--|---|---|
| Operator Cab Style              | Only available with Open Cab design  | Available in either Open Cab design with windshield but no doors or Fully Enclosed Cab design which also includes heater and air conditioner              |   |
| Cleaning Path                   | 34 in (86 cm) consistently cleaned   |   |   |
| Water Pump                      | Triplex plunger capable of 4,350 psi (300 bar) at 5.5 GPM (21 LPM)   |   |   |
| Output Pressure                 | Fixed 4,350 psi (300 bar)  | Infinitely variable 800 psi (55 bar) – 4,350 psi (300 bar)  |   |
| Cleaning and Recovery Head      | Hydraulically powered, cast aluminum 40 in (101.6 cm) diameter with protective shield. - Patented Design   |   |   |
| Water Heating System            | No inline heater   | Electronically fired, inline diesel powered heater with 375,000 BTU/hr output   |   |
| Filtration System               | No filtration system   | No filtration system  | Multi-stage filtration system consisting of two (2) 75 um and two (2) 30 um washable/reusable filter elements, each with 1,500 in <sup>2</sup> of filtration surface area |
| Water Tanks                     | Fresh cleaning water supply: 360 gal (1,363 L)<br>Recovery tank capacity: 315 gal (1,192 L)<br>Plastic with easy fill and clean out design   | 390 gal (1,476 L) combination supply and recovery tank that recycles and reuses water in continuous cycle. Fiberglass with easy fill and clean out design |   |
| Cleaning Attachments (Standard) | No attachments   | High pressure curb and gutter cleaning system and high pressure cleaning wand system standard with 25 feet (7.6 m) of hose with reel                      |   |
| Steering                        | Front wheel steering with hydraulic power assist   |   |   |
| Drive System                    | Two (2) speed hydrostatic system provides accurate speed control at cleaning speeds with a maximum transport speed of 10 mph (16 kph). Power delivered to front wheels               |   |   |
| Controls                        | All cleaning actions controlled from operator seat with ergonomic operator interface   |   |   |
| Brakes                          | Rear heavy duty automotive style 11 in hydraulic drum brake with additional hand lever actuated parking brake  |   |   |
| Fuel Tank                       | 18 gal (68 L)  |   |   |
| Chassis Frame Construction      | Welded structural steel tubing with 3 in by 2 in tubing with 0.120 in wall thickness   |   |   |
| Engine                          | Kubota Tier IV Liquid Cooled Turbo Diesel, 2.4 L, 59 hp (44 kW) – CY5000 - ST / CY5000 / CY5500<br>Kubota Tier IV Liquid Cooled Turbo Diesel, 2.6 L, 66 hp (49 kW) – CY5000 / CY5500 |   |   |
| Weight                          | Empty: 4,500 lb (2,041 kg)<br>Full: 7,500 lb (3,402 kg)  | Empty: 4,500 lb (2,041 kg)<br>Full: 7,500 lb (3,402 kg)   | Empty: 4,600 lb (2,087 kg)<br>Full: 7,600 lb (3,447 kg)   |
| Dimensions                      | 154 in x 56 in x 77.5 in (3.9 m x 1.4 m x 1.9 m)   |   |   |

Specifications are subject to change without notice.

### Optional Features

- High Visibility Paint – Safety Yellow or Orange
- Extended Runtime Trailer System



14600 21st Avenue North  
Plymouth, MN 55447-3408  
www.advance-us.com  
Phone 866-429-8175  
Fax 800-989-6566

240 Superior Boulevard  
Mississauga, Ontario, Canada L5T 2L2  
www.nilfisk-advance.com  
Phone 800-668-8400  
Fax 800-263-5111

Ask about our leasing options.

©2011 Nilfisk-Advance, Inc. L3055A 9-21-11

